

**Size**

61mm(L) \* 57(W) \* 30(H) mm (1U compliant)

**DC-Jack**

2.5\*5.5\*10 mm

**ATX connector**

Molex 39-01-2200

**Overload Protection**

Over load protection will be effected when either of the loads (+5V & +3.3V) exceeds > 200% Max Load.

**Turn-on Delay**

After turning on, at least 20ms will be needed for the rise of +5V output voltage (measured from 10% point to 95% point on the waveform) to reach its peak.

**Remote ON/OFF control**

Logic level is LOW  
Logic level is HIGH

Output voltage is enabled.  
Output voltage is disabled.

**Operating Environment**

Temperature  
Relative Humidity  
Altitude

0°C -75°C (32°F -167°F)  
10%-90%, non-condensing  
50,000 ft.

**Efficiency**

Over 95% at full load.

**Shipping and storage**

Temperature  
Relative Humidity

-40°C- 90°C (-40°F -194°F)  
5%-95%, non-condensing

**MTBF**

200,000 hours

**Warranty**

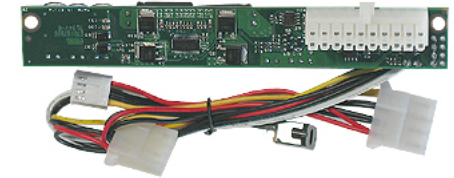
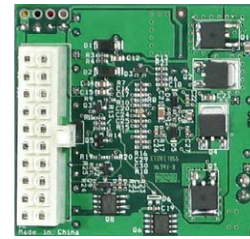
1 Year

**Support**

Email: [support@short-circuit.com](mailto:support@short-circuit.com)  
Web Site: <http://www.short-circuit.com>

**Sales**

<http://www.short-circuit.com/>



PW-200 series  
12V, 200W  
ATX DC-DC Converter

<http://www.short-circuit.com/>

**Quick Installation Guide**

Version 1.2  
P/N 10001/100010

NOT FOR CAR/VEHICLE USE

## Introduction

The PW-200 is a small, yet powerful and fully compliant ATX power supply designed to power a wide variety of standard PCs from a single 12V power source.

The PW-200 is the only cable-less mini-ITX power supply solution. Compatible with an entire range of mini-ITX motherboards as well as regular boards the PW-200 provides cool, silent power for your small system.

The PW-200 has many advantages over a regular power supply unit:

- 100% silent operation
- Low heat dissipation with efficiency over 95%
- Low RFI/RMI and low ripple noise.
- Plugs directly into the motherboard's power connector, eliminating the power supply cable mess
- Long life (MTBF rated at > 200,000 hours)

## Quick Installation

The PW-200 has been specifically designed for the Mini-ITX form factor, thus eliminating the need for ATX power cables or ATX power extenders.

In case you are using a non-mini-ITX board or a mini-ITX board that doesn't conform to the form factor that the PW-200 was designed for, please use a regular female-male ATX power supply extension cable.

- 1) After the power board was 'snapped in', hook the hard drive power or floppy power to your floppy/hard drives. If more hard drives or floppy connectors are needed, use a HDD/floppy "Y" splitter cable.
- 2) Connect a 12V DC power adapter (or any 12V source) to the DC-to-DC connector. If power adapter is not provided, please note that the WHITE cable is (+center)
- 3) Turn on the PC.

## Typical Configuration

The PW-200 has been tested with all mini-ITX board under virtually any hard disk/floppy/CDROM/video card configuration. Additionally, the PW-200 can power P4 boards. Please note that some P4 boards require P412V connector. Please visit <http://www.short-circuit.com> for models that have P412V cable harness or solder a P4 cable harness yourself into the 4 PCB holes located near the HDD/Floppy power connector.

## Removing the PW-200

In order to remove the PW-200 you must release the power connector latch and then pull up the unit. In case the latch is not accessible, insert a thin long rod into the hole and push the rod, sideways, against the latch.

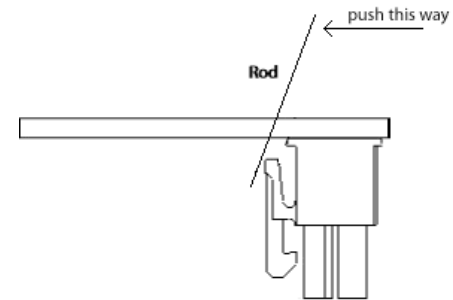


Fig 1.0, releasing the connector latch

## Specifications

### Power Ratings (Max. Power = 205 Watts)

Volts (V)	Max Load (A)	Peak Load (A)	Regulation %
5V	6A	10A	+/- 5%
5VSB	2A	10A	+/- 5%
3.3V	6A	10A	+/- 5%
-12V	0.1A	0.2A	+/- 10%
12V	12A	13.5A	N/A

### Efficiency Ratings

